

CAFN's Settlement Land Use Plan

Fall 2017 Update

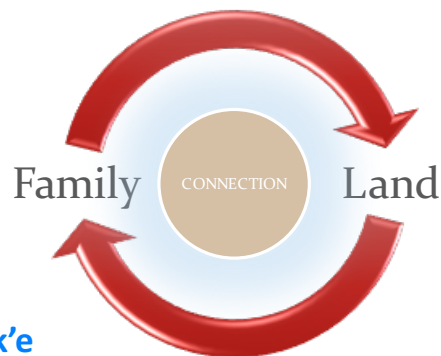
Background

CAFN Lands and Resources are working to continue our journey from self-government to self-reliance. A major part of that is exploring our vision for our land by creating a Settlement Land Use Plan (SLUP). The goals of this plan are to:

- Prepare for the Kluane Regional Land Use Plan,
 - Strengthen and empower our family-land connection as a means to create a better tomorrow for our generations to come,
 - Set expectations of land use for CAFN government, citizens and outside interests.
-

CAFN's Planning Approach

Our SLUP approach is rooted in *dän k'e* and seeks to reclaim the strength of our family-land connection. We are working with community members, our government and youth to create a plan that reflects and empowers our First Nation, in our way.



Remembering **Kät'ą k'e**

From Harmony to Oppression

Our History -Pre/Post Alaska Highway

Our Agreements

The wisdom of our leaders

The strength of *Dän K'e*

Working **Ak'ān dzēnu**

Healing Hurt, Balancing Two-worlds

Our Family Wellbeing

Our Government

Our Economy

For Our **Kät'ą**

Return to Harmony, Empowering Change

What are our economic opportunities?

How do we listen? Learning our teachings for happy, healthy, productive families

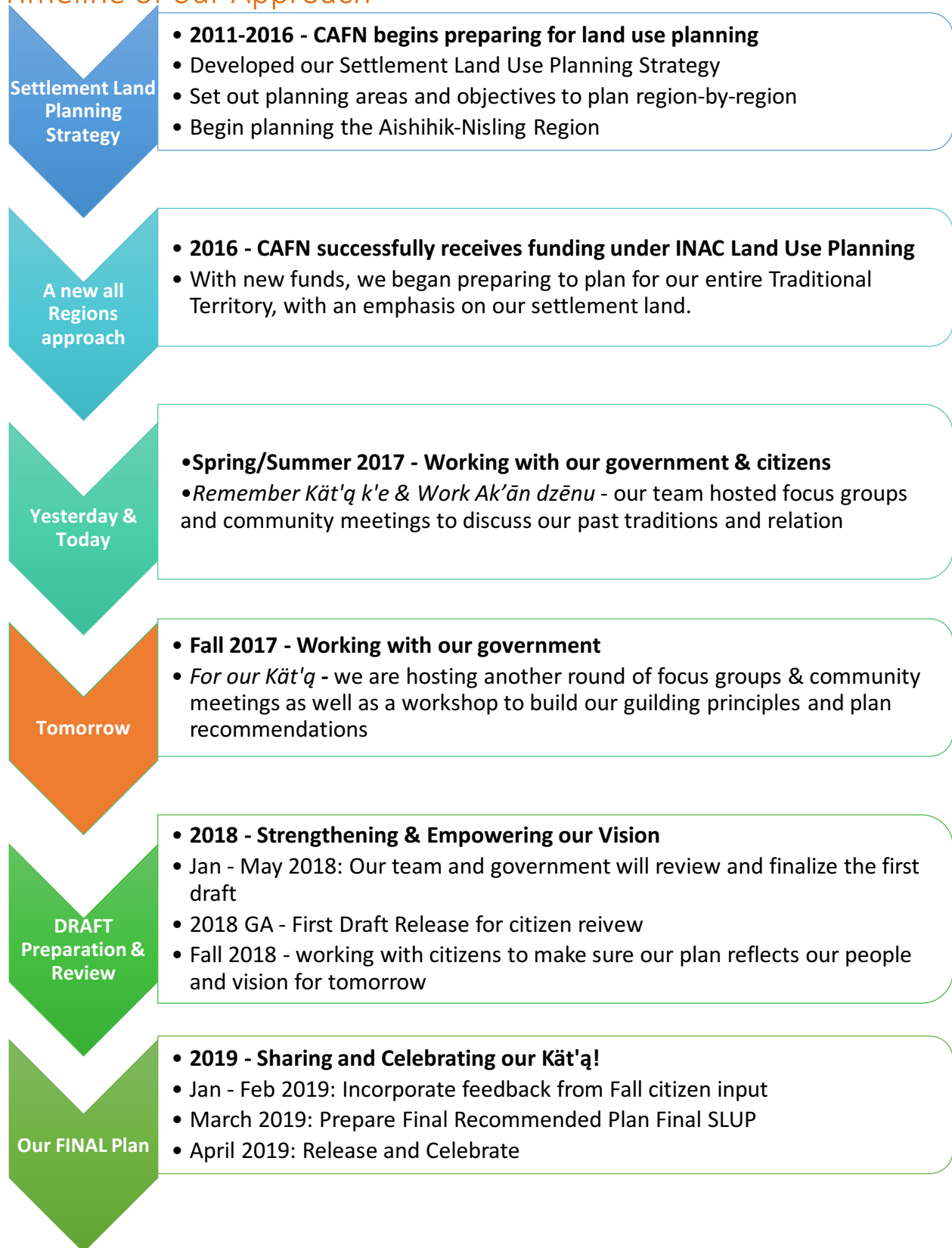
How do others share and enjoy our land?

How do we spend our time on the land? Cabins, villages and trails



CHAMPAGNE and AISHIHIK First Nations

Timeline of our Approach



Work completed to date

CAFN's SLUP team has been working with citizens and staff since to reflect on yesterday and today and begin formulating our vision for tomorrow. To date we have:

- Hosted a series of Focus Groups that includes 4-6 community members who are active on the land. We discussed our life with our land and how it has evolved from yesterday to today.
- Hosted a series of community meetings in Haines Junction, Takhini, Whitehorse and Champagne to discuss yesterday and today.
- Hosted CAFN office lunches to discuss how each staff member will play a role in implementing our plan.
- Hired 2 CAFN youth, Sarina Primozic and Whitney Johnson-Ward to assist our team during the summer months
- Sarina developed a "What our Land means to you" short film.
- Discussed our land vision with citizens over the summer months.

Next Steps

Building our Recommendations, Realizing our Vision

Today we are ready to discuss Kāt'ā. What is our vision for our land tomorrow?

Based on what we heard over the spring and summer we have developed the following themes to consider tomorrow's priorities and to frame our plan's final recommendations.

Settlement Land Use Plan Priority Themes

STRONG, ROOTED FAMILIES

Strengthening Culture & Language

Healing, Identity & Worth

CAFN generated Business and employment

Empowering CAFN Government

Community, Food, Cabins & Trails

SHARED PROSPERITY

Mineral Potential

Oil & Gas, Energy

Tourism, Agriculture

Forestry, Recreation

Residential

Transportation and Infrastructure

SHARED STEWARDSHIP

Heritage, Climate Change

Wildlife, Fish

Water, Fire

Air

Land

For more information contact:

Jocelyn Joe-Strack

Consultant, Subarctic Research & Strategy

867-335-7122

Jocelyn@subarctic.ca

Analie Lafreniere-Lemieux

Land Planning Officer, Lands & Resources

867-634-4200 Ext 254

alafreniere-lemieux@cafn.ca



CHAMPAGNE and AISHIHIK First Nations